

Figure S3. Survival curves of patients with different therapeutic protocols

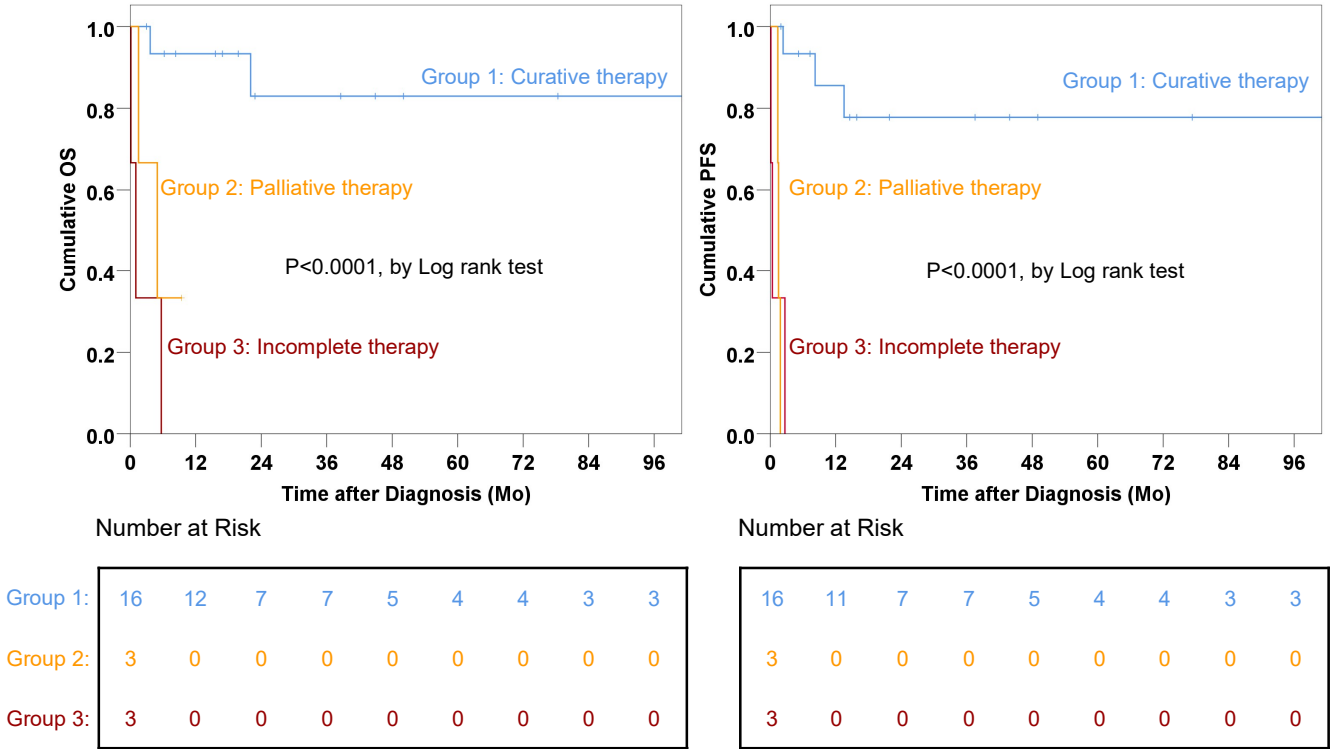


Figure S3. Survival curves of patients with curative (blue line) , palliative (yellow line) and incomplete therapy (red line) using OS (A) and PFS (B) as endpoints. Abbreviations: OS=overall survival; PFS=progression-free survival; Mo=months; HR=hazard ratio; 95%CI=95% confidence interval.